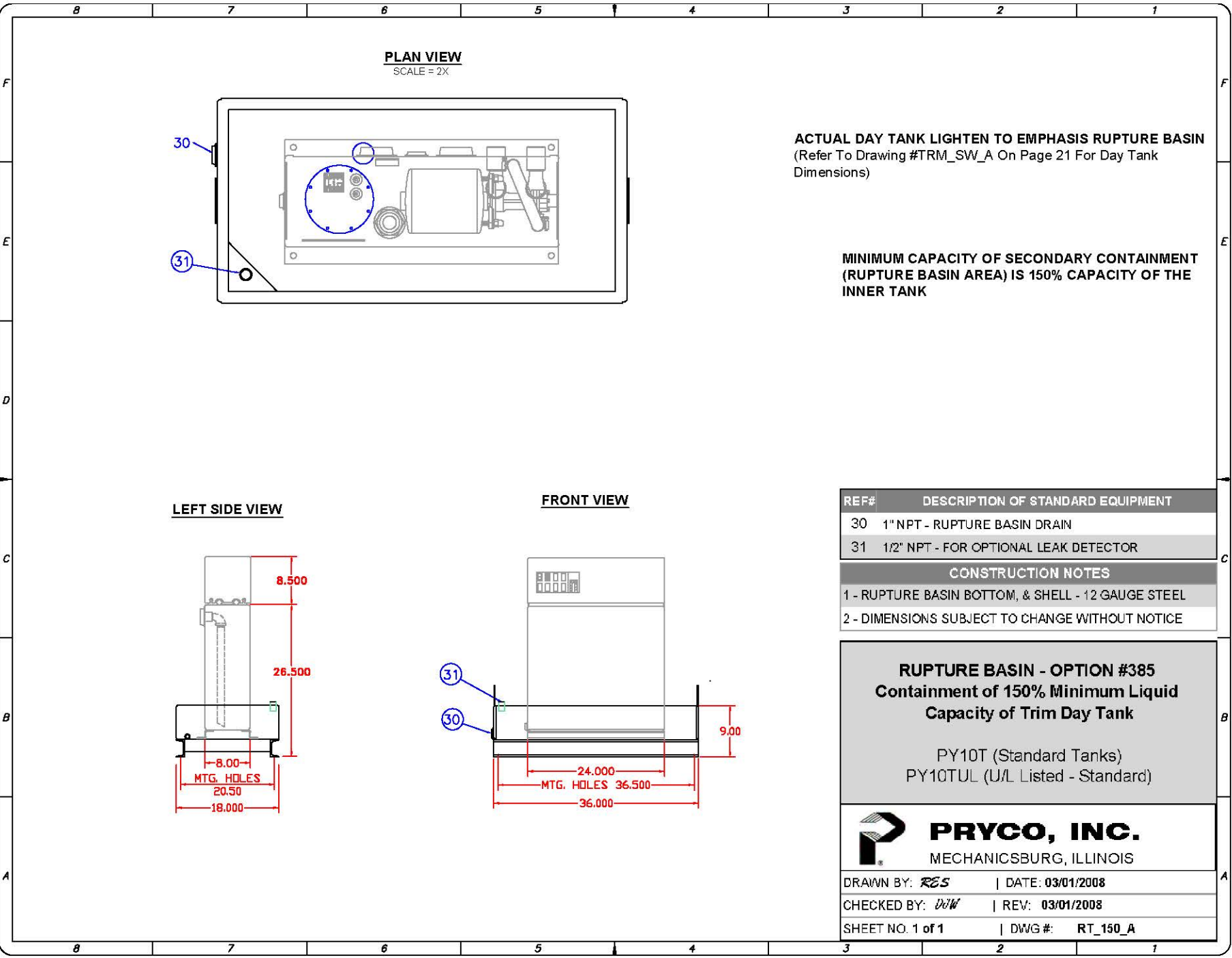


P.O. Box 108, Mechanicsburg, IL 62545

DT-31

Phone - 217 / 364-4467 Fax - 217 / 364-4494



PLAN VIEW
SCALE = 2X

ACTUAL DAY TANK LIGHTEN TO EMPHASIS RUPTURE BASIN
(Refer To Drawing #TRM_SW_A On Page 21 For Day Tank Dimensions)

MINIMUM CAPACITY OF SECONDARY CONTAINMENT (RUPTURE BASIN AREA) IS 150% CAPACITY OF THE INNER TANK

LEFT SIDE VIEW

FRONT VIEW

REF#	DESCRIPTION OF STANDARD EQUIPMENT
30	1" NPT - RUPTURE BASIN DRAIN
31	1/2" NPT - FOR OPTIONAL LEAK DETECTOR

CONSTRUCTION NOTES	
1	RUPTURE BASIN BOTTOM, & SHELL - 12 GAUGE STEEL
2	DIMENSIONS SUBJECT TO CHANGE WITHOUT NOTICE

RUPTURE BASIN - OPTION #385
Containment of 150% Minimum Liquid Capacity of Trim Day Tank

PY10T (Standard Tanks)
 PY10TUL (U/L Listed - Standard)

PRYCO, INC.
 MECHANICSBURG, ILLINOIS

DRAWN BY: *RES* | DATE: 03/01/2008
 CHECKED BY: *DJW* | REV: 03/01/2008
 SHEET NO. 1 of 1 | DWG #: RT_150_A

150% Rupture Basin for Trim Day Tank - 10 Gallon Capacity