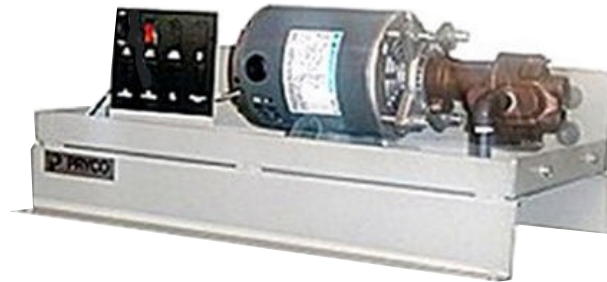


**Single Remote Pumping Unit
(with Standard Pump & Motor)
Option #397A**



The purpose of a Remote Pumping Unit is to relocate the pump/motor away from the day tank or sub-base tank for several reasons, including:

- * **Distance** between main storage tank and the day/sub-base tank. The suction of all pumps is limited to 18' of vertical lift or 200' of horizontal run.
- * **Discharge Pressure** - Up to 100 psi for all pumps; and,
- * **Convenience** - fuel supply or return pump/motor(s), in any configuration or size, may be relocated to a Remote Pumping Unit.

The remote unit frames are constructed of heavy gauge steel with a removable cover for a NEMA 3R enclosure rating.

The standard "single" unit, Option #397A, is equipped with our standard pump and motor (a 2GPM bronze pump and a 1/3HP, 115VAC, 1PH, 60HZ, thermal protected motor). The standard "duplex" unit, Option #397B, has a second pump/motor set. (Large, custom-designed remote units can be built to your specifications.)

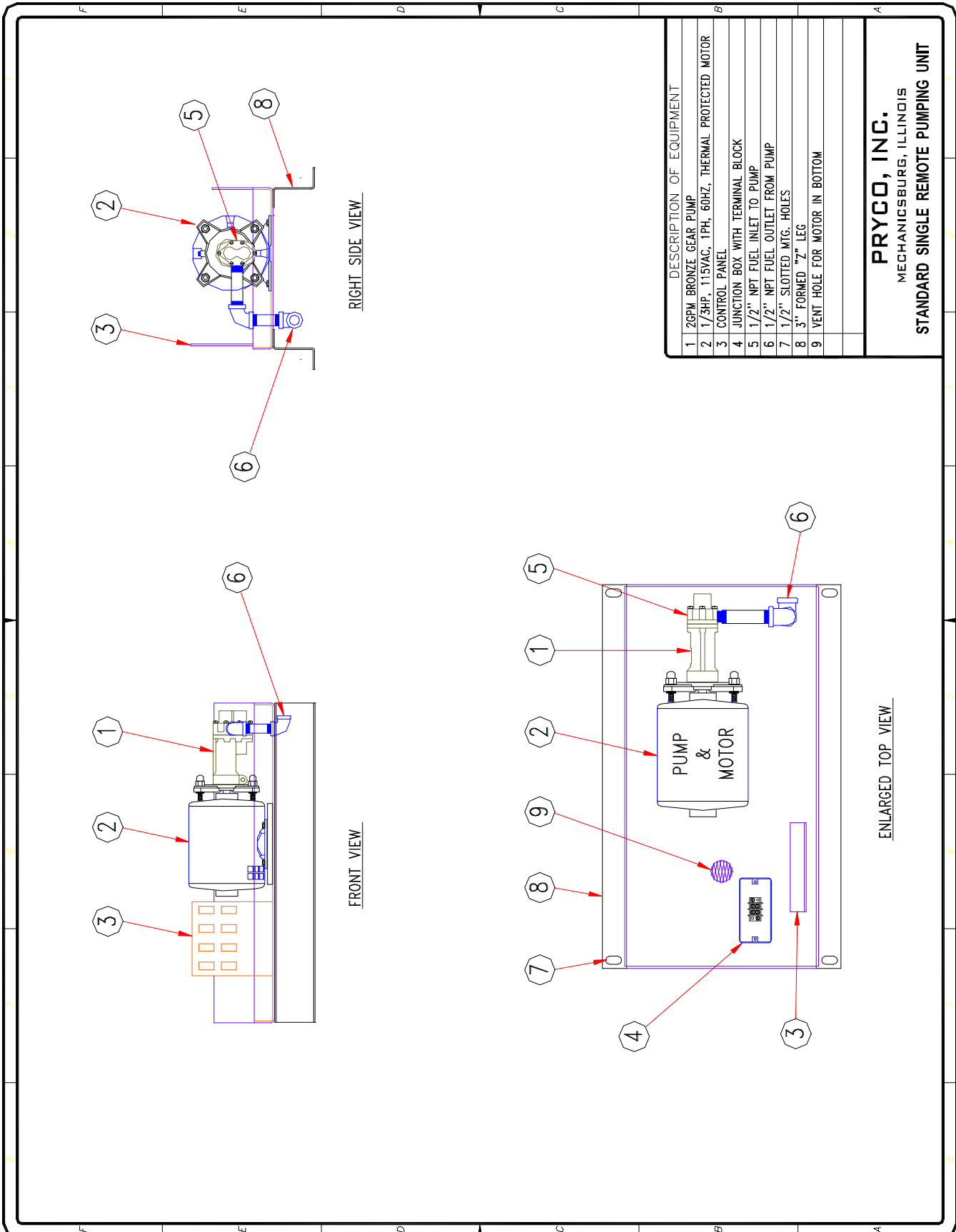
Mechanical drawings of Remote Pumping Units are on the following pages.



**Duplex Remote Pumping Unit
Option #397B**



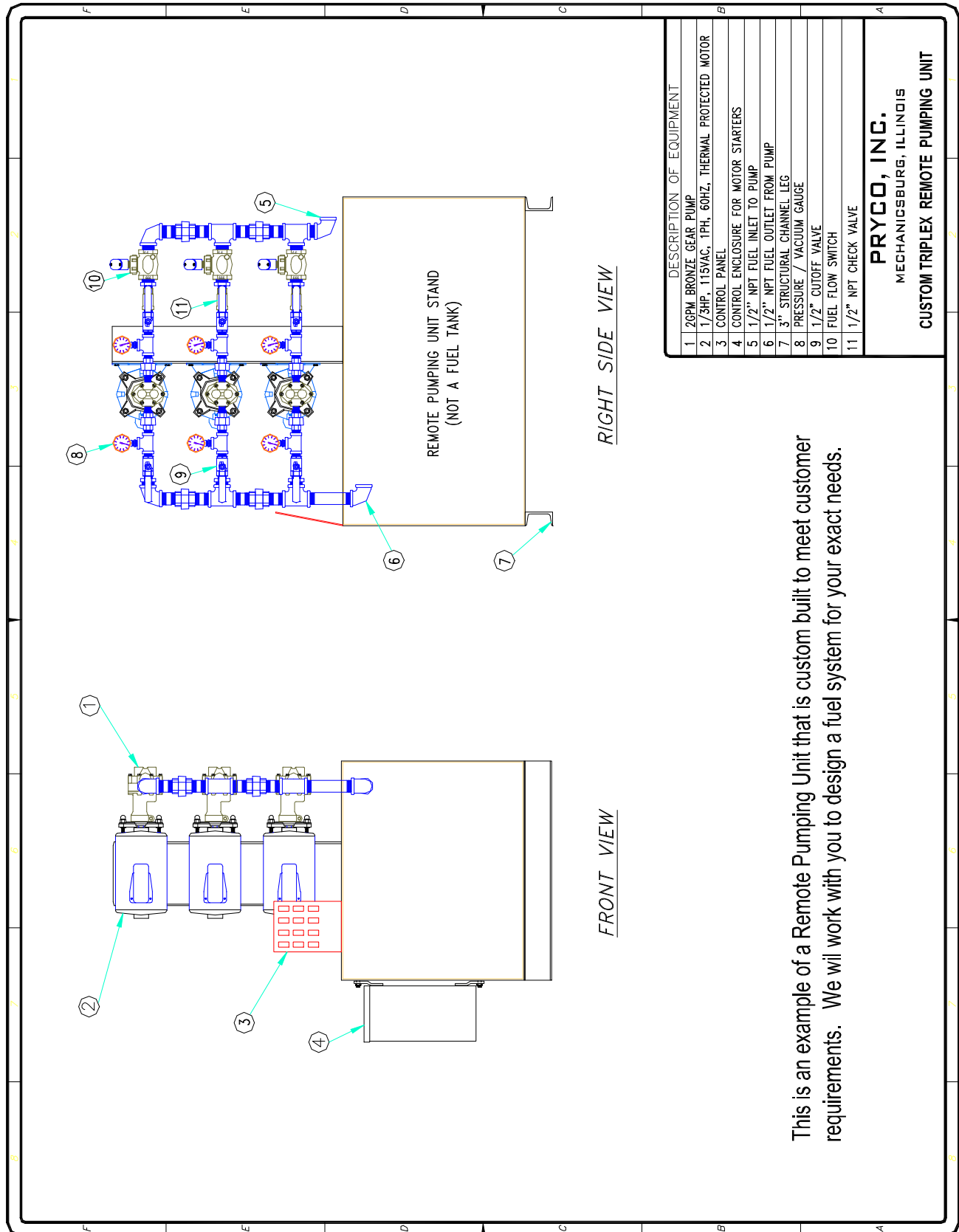
STANDARD SINGLE REMOTE PUMPING UNIT



| DESCRIPTION OF EQUIPMENT | |
|--------------------------|---|
| 1 | 20PM BRONZE GEAR PUMP |
| 2 | 1/3HP, 115VAC, 1PH, 60HZ, THERMAL PROTECTED MOTOR |
| 3 | CONTROL PANEL |
| 4 | JUNCTION BOX WITH TERMINAL BLOCK |
| 5 | 1/2" NPT FUEL INLET TO PUMP |
| 6 | 1/2" NPT FUEL OUTLET FROM PUMP |
| 7 | 1/2" SLOTTED MTC. HOLES |
| 8 | 3" FORMED "7" LEG |
| 9 | VENT HOLE FOR MOTOR IN BOTTOM |

PRYCO, INC.
 MECHANICSBURG, ILLINOIS
STANDARD SINGLE REMOTE PUMPING UNIT

CUSTOM TRIPLEX REMOTE PUMPING UNIT



This is an example of a Remote Pumping Unit that is custom built to meet customer requirements. We will work with you to design a fuel system for your exact needs.

PRYCO, INC.
MECHANICSBURG, ILLINOIS
CUSTOM TRIPLEX REMOTE PUMPING UNIT