



This weatherproof fill panel (Option # 226) is for remote monitoring of "off street" bulk filling.

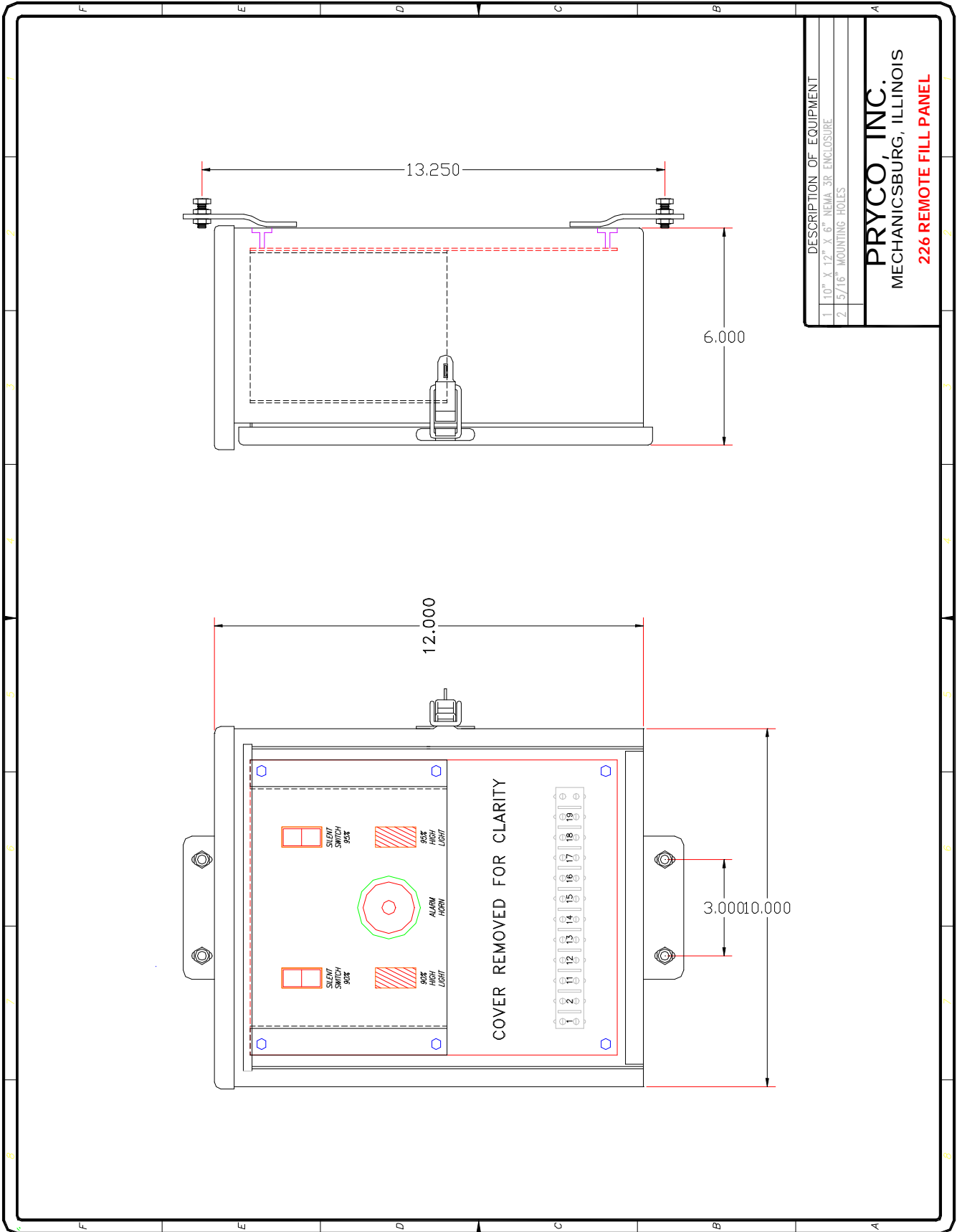
When your day tank or sub-base tank is 90% filled, a warning light comes on and an alarm horn sounds. If pumping continues, a second light comes on at 95% capacity and an alarm horn sounds. At this time, an optional solenoid valve will close allowing no more fuel to enter the tank.

It comes with a lockable hasp and is U/L listed.

A mechanical drawing of Remote Fuel Fill Panel is on the reverse side.



226 REMOTE FILL PANEL



DESCRIPTION OF EQUIPMENT	
1	10" X 12" X 6" NEMA 3R ENCLOSURE
2	5/16" MOUNTING HOLES

PRYCO, INC.
 MECHANICSBURG, ILLINOIS
226 REMOTE FILL PANEL