

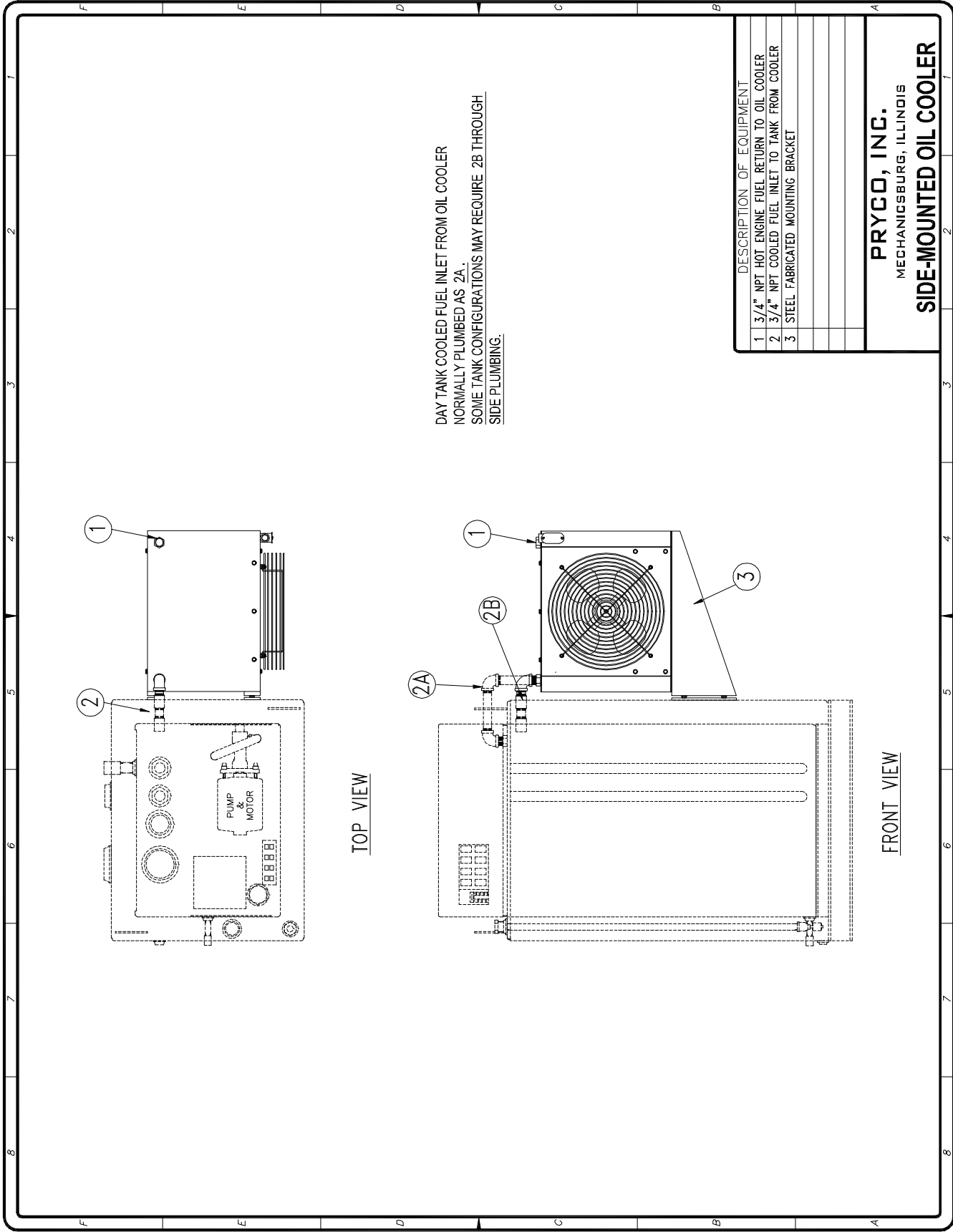
Option # 352, Fuel Oil Cooler, reduces the temperature of hot fuel that is returned from the engine to the day tank.

Normally, an oil cooler is top-mounted on larger day tanks (because they have room on the top surface), or side mounted on medium size tank. On smaller tanks, sub-base units, or when required, an oil cooler is relocated to a free standing base.

Mechanical drawings of the three mounting configurations are shown on the following pages.



SIDE-MOUNTED OIL COOLER



DAY TANK COOLED FUEL INLET FROM OIL COOLER
 NORMALLY PLUMBED AS 2A.
 SOME TANK CONFIGURATIONS MAY REQUIRE 2B THROUGH
 SIDE PLUMBING.

DESCRIPTION OF EQUIPMENT	
1	3/4" NPT HOT ENGINE FUEL RETURN TO OIL COOLER
2	3/4" NPT COOLED FUEL INLET TO TANK FROM COOLER
3	STEEL FABRICATED MOUNTING BRACKET

PRYCO, INC.
 MECHANICSBURG, ILLINOIS
SIDE-MOUNTED OIL COOLER

