



Standard Battery Frame



Seismic Battery Frame

Pryco has four standard sizes of battery frames and two different designs. The first is our "standard" design that will accommodate most applications. The second, our "seismic" design, has a top hold-down frame with heavy duty rods bolted up from the bottom frame. The sizes are shown in accompanying table.

Also, we can custom build sizes and configurations to meet your specifications.

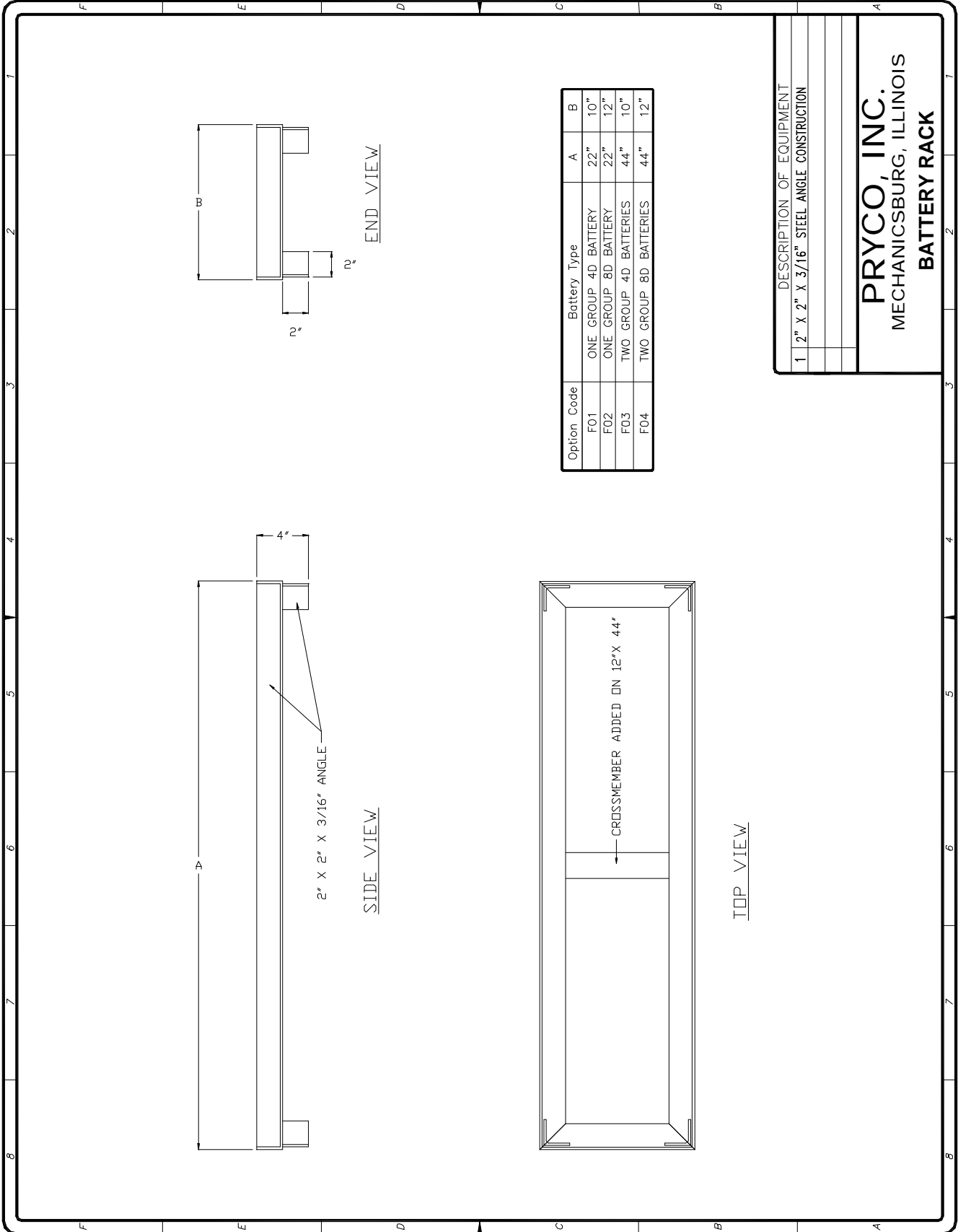
The standard battery frames are 4" high and the seismic units are 12.25" high. Both are constructed of formed 7-gauge steel. They are painted black or an industrial color of choice.

Mechanical drawings of both Battery Frame designs are on the following pages.

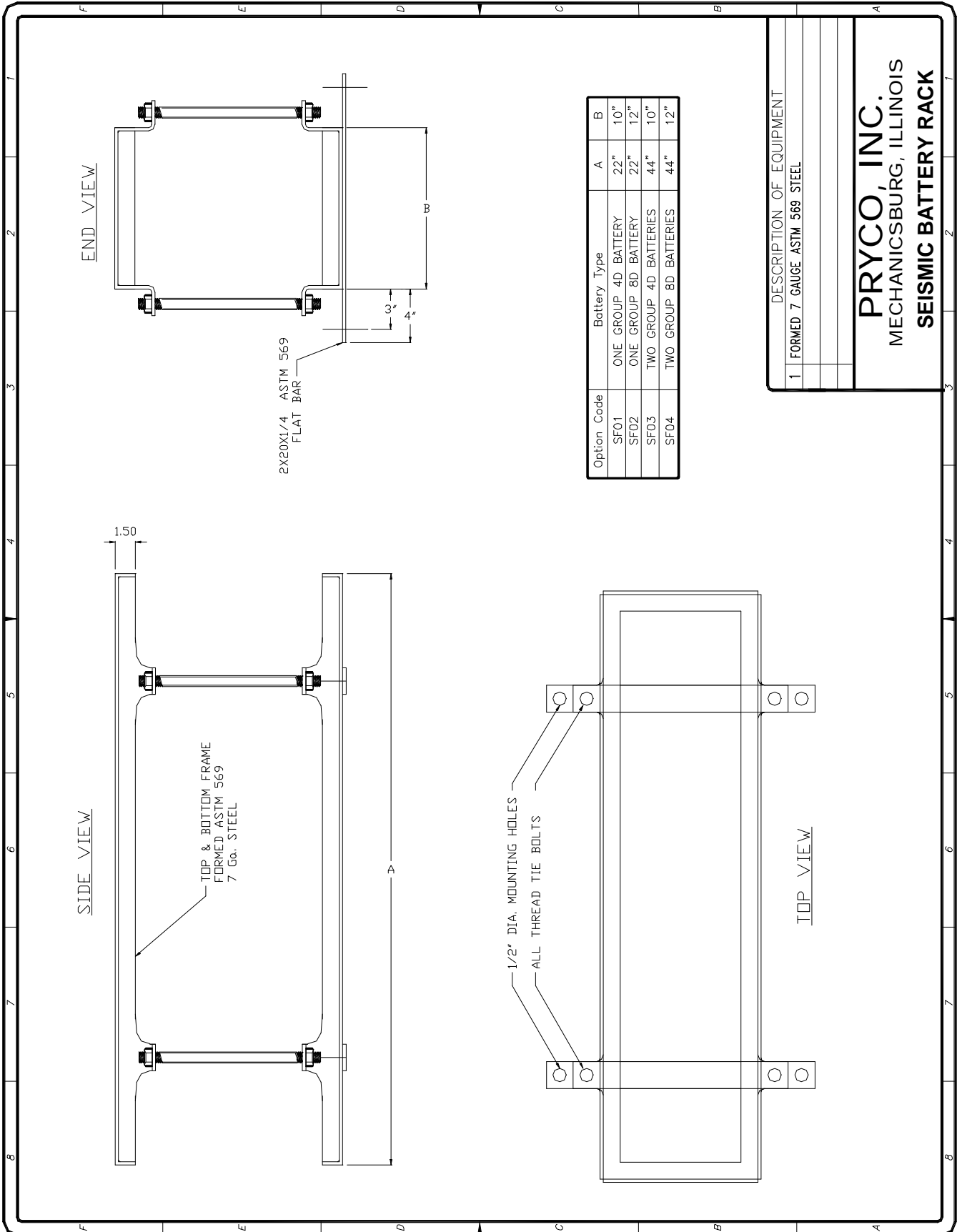
Option Code	Length	Standard Width	Seismic Width	Battery Sizes
F01	22"	10"	20"	1 - Group 4D
F02	22"	12"	20"	1 - Group 8D
F03	44"	10"	20"	2 - Group 4D
F04	44"	12"	20"	2 - Group 8D



# BATTERY RACK



# SEISMIC BATTERY RACK



Option Code	Battery Type	A	B
SF01	ONE GROUP 4D BATTERY	22"	10"
SF02	ONE GROUP 8D BATTERY	22"	12"
SF03	TWO GROUP 4D BATTERIES	44"	10"
SF04	TWO GROUP 8D BATTERIES	44"	12"

DESCRIPTION OF EQUIPMENT	
1	FORMED 7 GAUGE ASTM 569 STEEL

**PRYCO, INC.**  
 MECHANICSBURG, ILLINOIS  
**SEISMIC BATTERY RACK**