



Option Code	Length	Width	Height	Battery Sizes	Heater
B01	23"	12"	12"	1 - 4D or 1- 8D	n/a
B02	44"	12"	12"	2 - 4D or 2 - 8D	n/a
B03	44"	12"	12"	2 - 4D or 2 - 8D	100 w., 115 vac
B04	44"	12"	12"	2 - 4D or 2 - 8D	100 w. , 115vac w/Thermostat

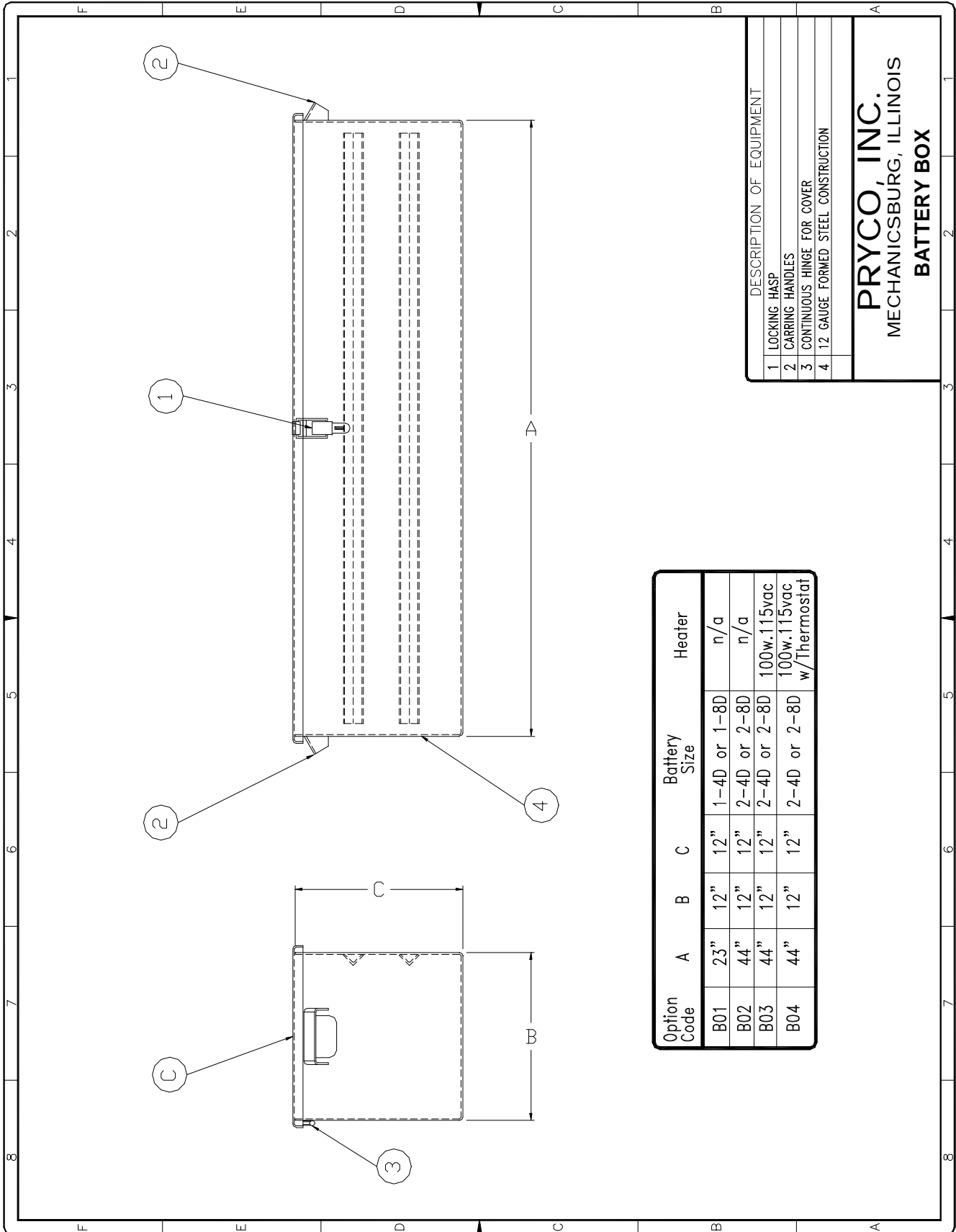
Pryco has four standard sizes of battery boxes. The sizes are shown in accompanying table. Also, we can custom build sizes and configurations to meet your specifications.

The battery boxes are a waterproof enclosure with hinged cover with a lockable hasp and carrying handles. They are epoxy coated inside for corrosion resistance and painted black or an industrial color of choice.

A mechanical drawing of Battery Boxes is on the reverse side.



# BATTERY BOX



DESCRIPTION OF EQUIPMENT	
1	LOCKING HASP
2	CARRING HANDLES
3	CONTINUOUS HINGE FOR COVER
4	12 GAUGE FORMED STEEL CONSTRUCTION

**PRYCO, INC.**  
 MECHANICSBURG, ILLINOIS  
**BATTERY BOX**

Option Code	A	B	C	Battery Size	Heater
B01	23"	12"	12"	1-4D or 1-8D	n/a
B02	44"	12"	12"	2-4D or 2-8D	n/a
B03	44"	12"	12"	2-4D or 2-8D	100w.115vac
B04	44"	12"	12"	2-4D or 2-8D	100w.115vac w/Thermostat