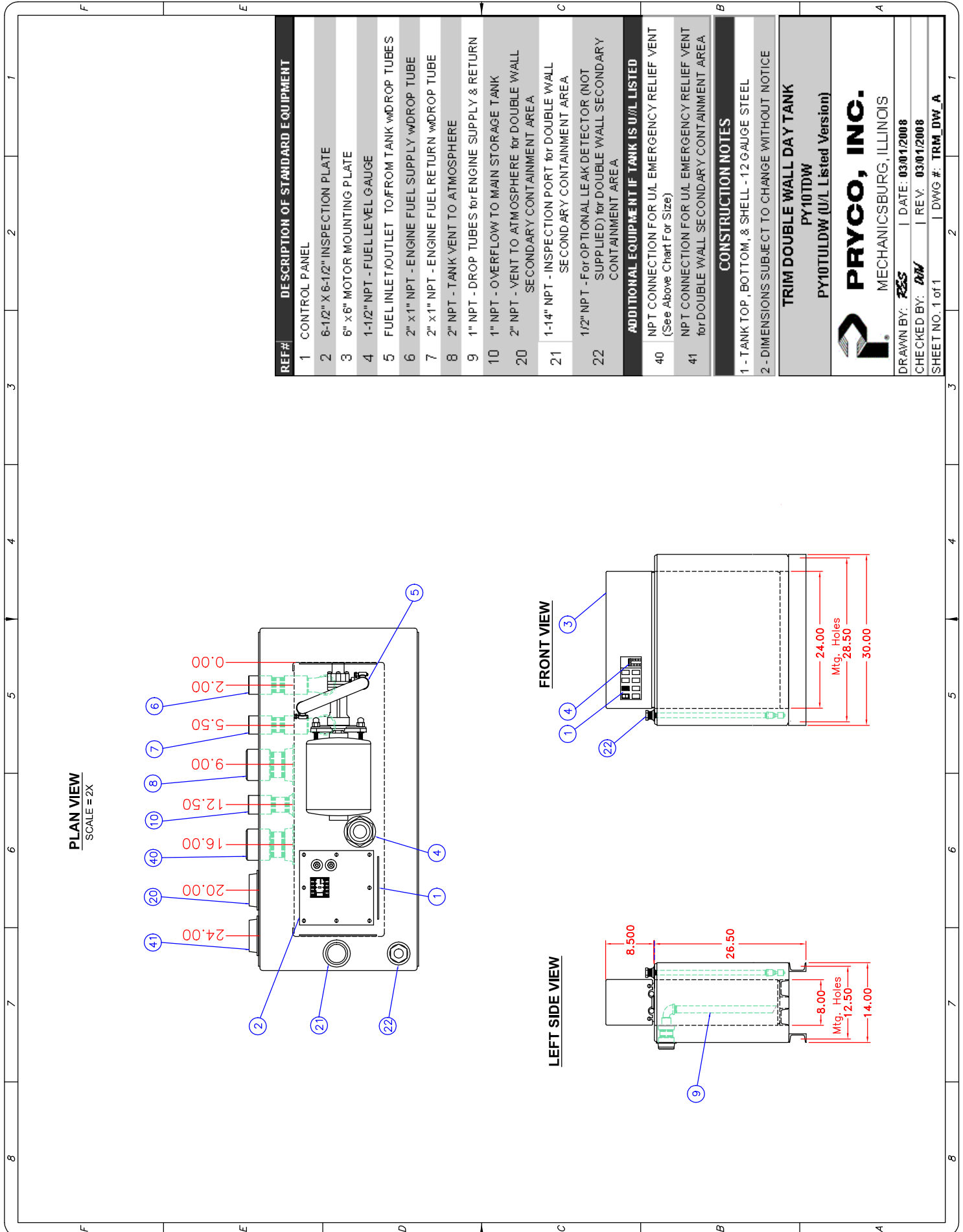


# Trim Double Wall Day Tank - 10 Gallon Capacity



REF#	DESCRIPTION OF STANDARD EQUIPMENT
1	CONTROL PANEL
2	6-1/2" X 6-1/2" INSPECTION PLATE
3	6" X 6" MOTOR MOUNTING PLATE
4	1-1/2" NPT - FUEL LEVEL GAUGE
5	FUEL INLET/OUTLET TO/FROM TANK w/DROP TUBES
6	2" X 1" NPT - ENGINE FUEL SUPPLY w/DROP TUBE
7	2" X 1" NPT - ENGINE FUEL RETURN w/DROP TUBE
8	2" NPT - TANK VENT TO ATMOSPHERE
9	1" NPT - DROP TUBES for ENGINE SUPPLY & RETURN
10	1" NPT - OVERFLOW TO MAIN STORAGE TANK
20	2" NPT - VENT TO ATMOSPHERE for DOUBLE WALL SECONDARY CONTAINMENT AREA
21	1-1/4" NPT - INSPECTION PORT for DOUBLE WALL SECONDARY CONTAINMENT AREA
22	1/2" NPT - For OPTIONAL LEAK DETECTOR (NOT SUPPLIED) for DOUBLE WALL SECONDARY CONTAINMENT AREA
ADDITIONAL EQUIPMENT IF TANK IS U/L LISTED	
40	NPT CONNECTION FOR U/L EMERGENCY RELIEF VENT (See Above Chart For Size)
41	NPT CONNECTION FOR U/L EMERGENCY RELIEF VENT for DOUBLE WALL SECONDARY CONTAINMENT AREA

**CONSTRUCTION NOTES**

1 - TANK TOP, BOTTOM, & SHELL - 12 GAUGE STEEL  
2 - DIMENSIONS SUBJECT TO CHANGE WITHOUT NOTICE

**TRIM DOUBLE WALL DAY TANK**  
PY10TDW  
PY10TULDW (U/L Listed Version)

**PRYCO, INC.**  
MECHANICSBURG, ILLINOIS

DRAWN BY: *RSS* | DATE: 03/01/2008  
CHECKED BY: *AM* | REV: 03/01/2008  
SHEET NO. 1 of 1 | DWG #: TRM\_DW\_A