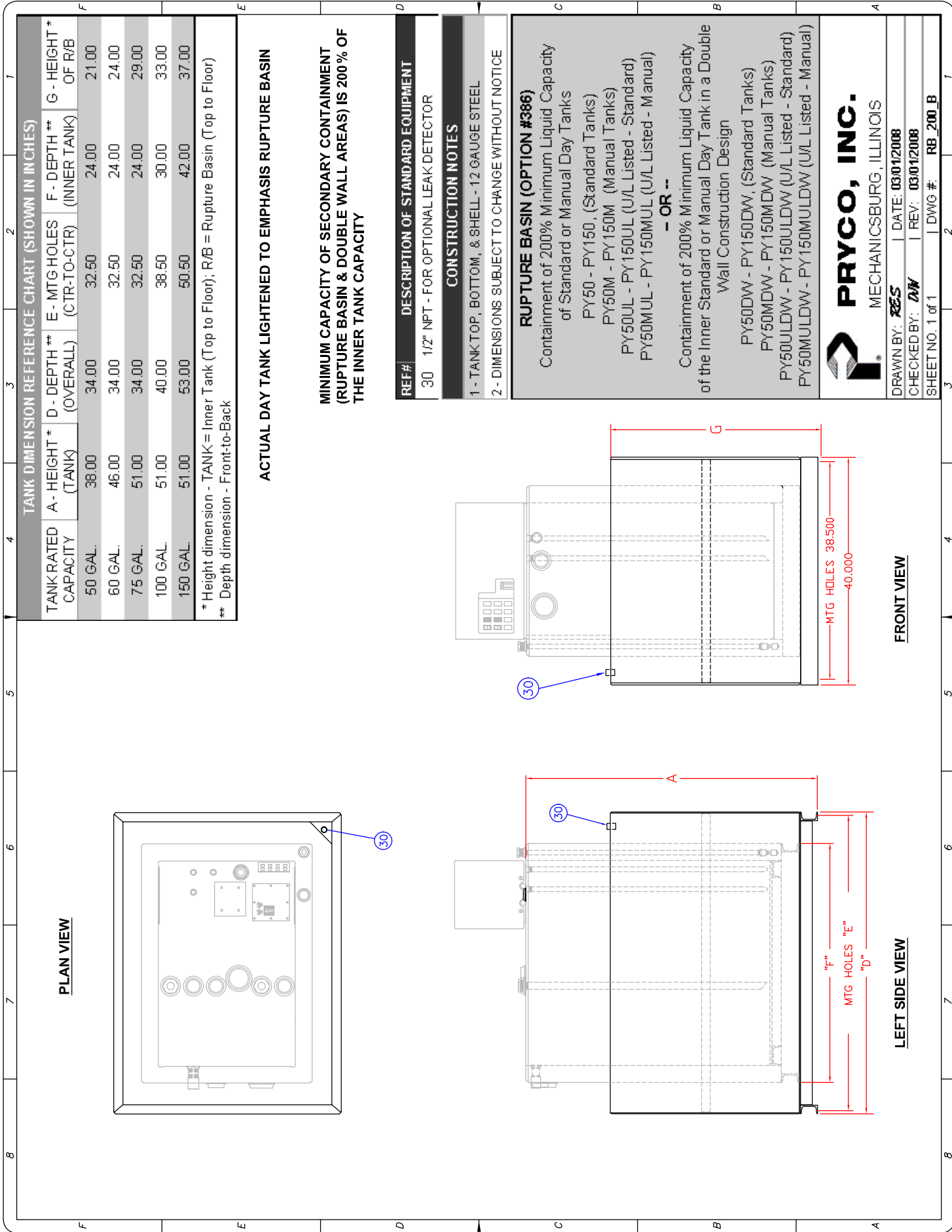


200% Rupture Basins For Standard & Manual Day Tanks With 50 To 150 Gallons Capacity



TANK DIMENSION REFERENCE CHART (SHOWN IN INCHES)

TANK RATED CAPACITY	A - HEIGHT * (TANK)	D - DEPTH ** (OVERALL)	E - MTG HOLES (CTR-TO-CTR)	F - DEPTH ** (INNER TANK)	G - HEIGHT * OF R/B
50 GAL.	38.00	34.00	32.50	24.00	21.00
60 GAL.	46.00	34.00	32.50	24.00	24.00
75 GAL.	51.00	34.00	32.50	24.00	29.00
100 GAL.	51.00	40.00	38.50	30.00	33.00
150 GAL.	51.00	53.00	50.50	42.00	37.00

* Height dimension - TANK = Inner Tank (Top to Floor); R/B = Rupture Basin (Top to Floor)
 ** Depth dimension - Front-to-Back

ACTUAL DAY TANK LIGHTENED TO EMPHASIS RUPTURE BASIN

MINIMUM CAPACITY OF SECONDARY CONTAINMENT (RUPTURE BASIN & DOUBLE WALL AREAS) IS 200% OF THE INNER TANK CAPACITY

- DESCRIPTION OF STANDARD EQUIPMENT**
- 30 1/2" NPT - FOR OPTIONAL LEAK DETECTOR
- CONSTRUCTION NOTES**
- 1 - TANK TOP, BOTTOM, & SHELL - 12 GAUGE STEEL
 - 2 - DIMENSIONS SUBJECT TO CHANGE WITHOUT NOTICE

RUPTURE BASIN (OPTION #386)


Containment of 200% Minimum Liquid Capacity of Standard or Manual Day Tanks

PY50 - PY150, (Standard Tanks)
 PY50M - PY150M (Manual Tanks)
 PY50UL - PY150UL (U/L Listed - Standard)
 PY50MUL - PY150MUL (U/L Listed - Manual)

- OR -

Containment of 200% Minimum Liquid Capacity of the Inner Standard or Manual Day Tank in a Double Wall Construction Design

PY50DW - PY150DW, (Standard Tanks)
 PY50MDW - PY150MDW (Manual Tanks)
 PY50ULDW - PY150ULDW (U/L Listed - Standard)
 PY50MULDW - PY150MULDW (U/L Listed - Manual)



PRYCO, INC.
 MECHANICSBURG, ILLINOIS

DRAWN BY: RES	DATE: 03/01/2008
CHECKED BY: DW	REV: 03/01/2008
SHEET NO. 1 of 1	DWG #: RB_200_B