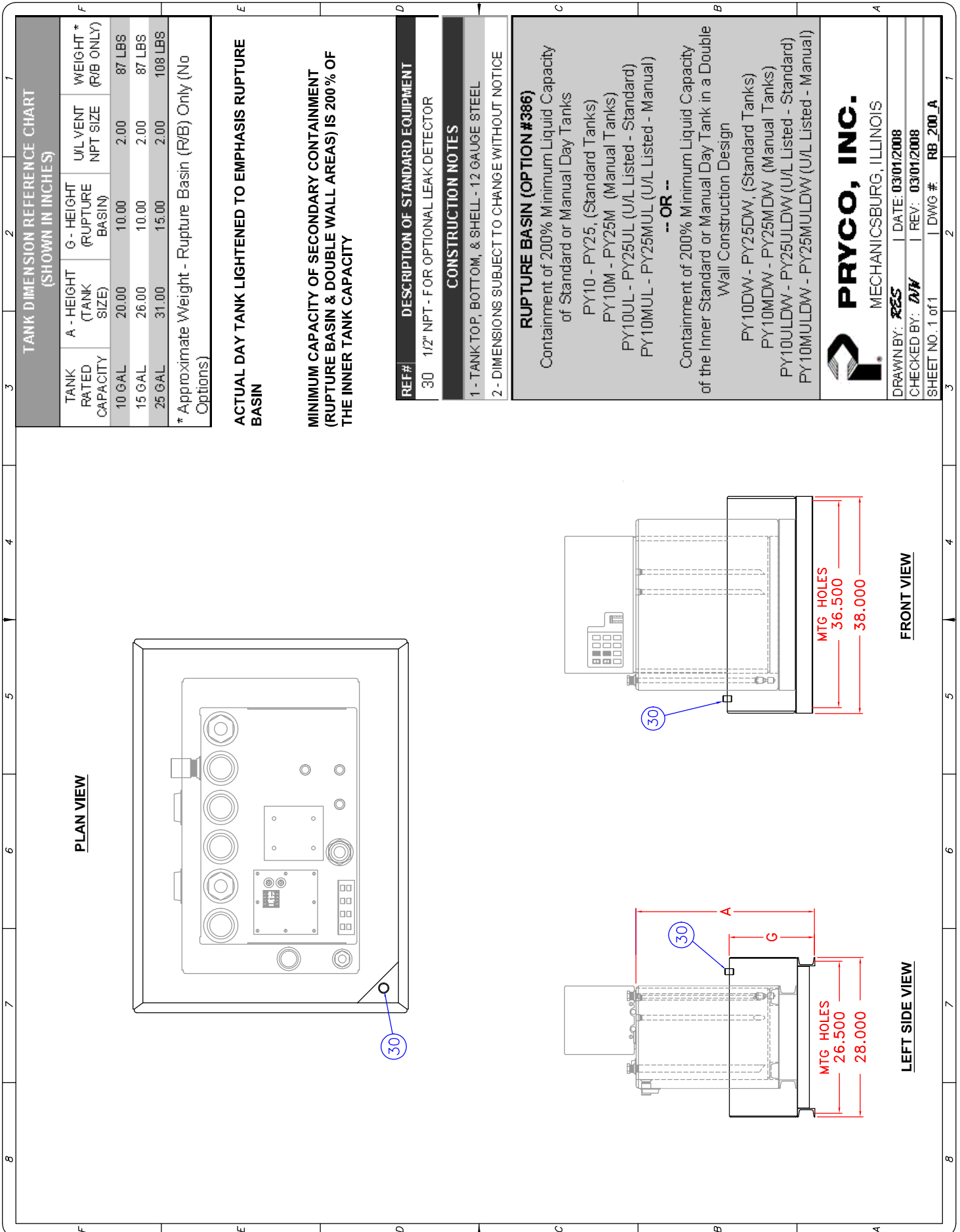


200% Rupture Basins For Standard & Manual Day Tanks With 10 To 25 Gallons Capacity



TANK DIMENSION REFERENCE CHART (SHOWN IN INCHES)

| TANK RATED CAPACITY | A - HEIGHT (TANK SIZE) | G - HEIGHT (RUPTURE BASIN) | U/L VENT NPT SIZE | WEIGHT* (R/B ONLY) |
|---------------------|------------------------|----------------------------|-------------------|--------------------|
| 10 GAL | 20.00 | 10.00 | 2.00 | 87 LBS |
| 15 GAL | 26.00 | 10.00 | 2.00 | 87 LBS |
| 25 GAL | 31.00 | 15.00 | 2.00 | 108 LBS |

* Approximate Weight - Rupture Basin (R/B) Only (No Options)

ACTUAL DAY TANK LIGHTENED TO EMPHASIS RUPTURE BASIN

MINIMUM CAPACITY OF SECONDARY CONTAINMENT (RUPTURE BASIN & DOUBLE WALL AREAS) IS 200% OF THE INNER TANK CAPACITY

REF# DESCRIPTION OF STANDARD EQUIPMENT

30 1/2" NPT - FOR OPTIONAL LEAK DETECTOR

CONSTRUCTION NOTES

- 1 - TANK TOP, BOTTOM, & SHELL - 12 GAUGE STEEL
- 2 - DIMENSIONS SUBJECT TO CHANGE WITHOUT NOTICE

RUPTURE BASIN (OPTION #386)

Containment of 200% Minimum Liquid Capacity of Standard or Manual Day Tanks

PY10 - PY25, (Standard Tanks)
 PY10M - PY25M (Manual Tanks)
 PY10UL - PY25UL (U/L Listed - Standard)
 PY10MUL - PY25MUL (U/L Listed - Manual)

--OR--

Containment of 200% Minimum Liquid Capacity of the Inner Standard or Manual Day Tank in a Double Wall Construction Design

- PY10DW - PY25DW, (Standard Tanks)
- PY10MDW - PY25MDW (Manual Tanks)
- PY10ULDW - PY25ULDW (U/L Listed - Standard)
- PY10MULDW - PY25MULDW (U/L Listed - Manual)



DRAWN BY: RES | DATE: 03/01/2008
 CHECKED BY: DW | REV: 03/01/2008
 SHEET NO. 1 of 1 | DWG # RB_200_A