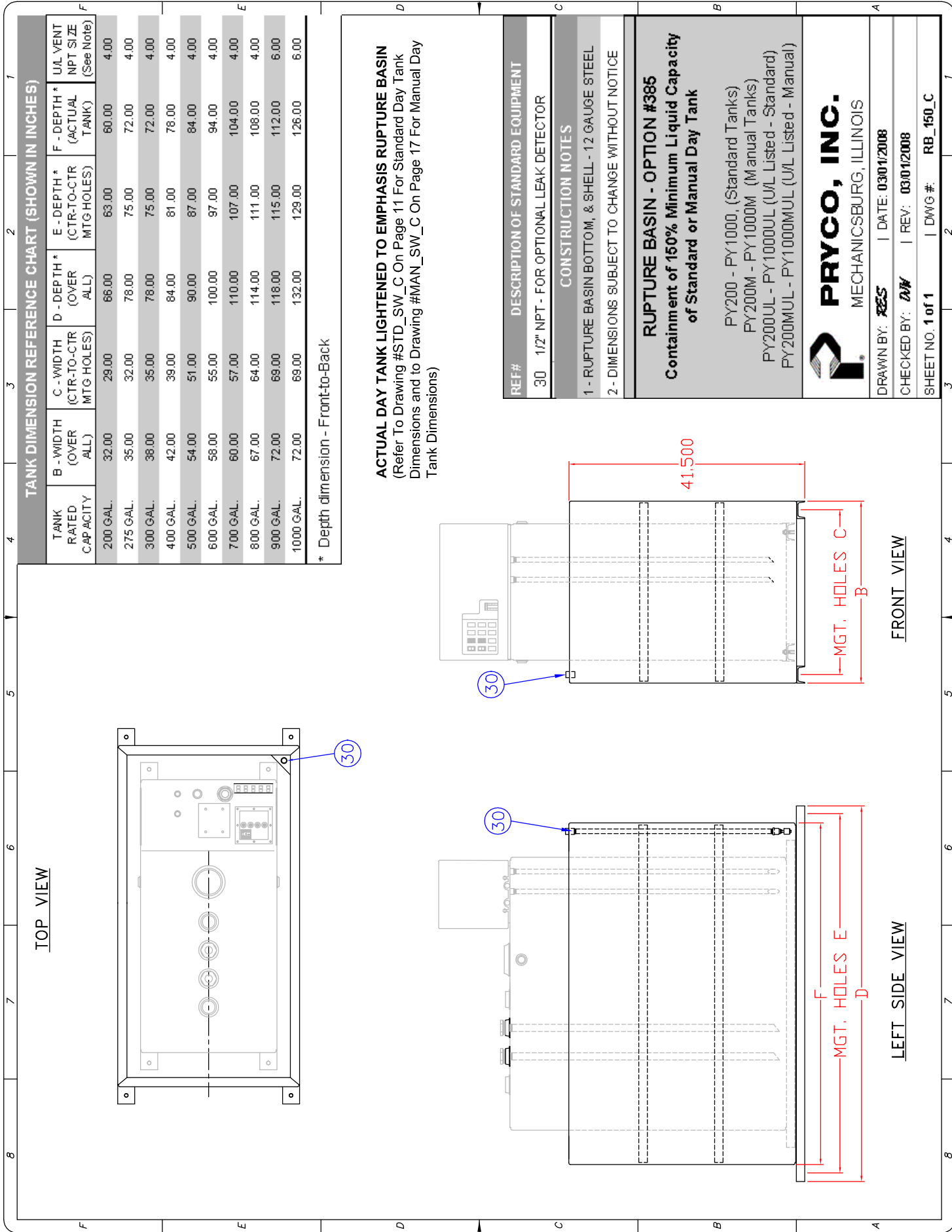


150% Rupture Basins For Standard & Manual Day Tanks

With 200 To 1000 Gallons Capacity




TANK DIMENSION REFERENCE CHART (SHOWN IN INCHES)

TANK RATED CAPACITY	B - WIDTH (OVER ALL)	C - WIDTH (CTR-TO-CTR MTG HOLES)	D - DEPTH* (OVER ALL)	E - DEPTH* (CTR-TO-CTR MTG HOLES)	F - DEPTH* (ACTUAL TANK)	U/L VENT NPT SIZE (See Note)
200 GAL.	32.00	29.00	66.00	63.00	60.00	4.00
275 GAL.	35.00	32.00	78.00	75.00	72.00	4.00
300 GAL.	38.00	35.00	78.00	75.00	72.00	4.00
400 GAL.	42.00	39.00	84.00	81.00	78.00	4.00
500 GAL.	54.00	51.00	90.00	87.00	84.00	4.00
600 GAL.	58.00	55.00	100.00	97.00	94.00	4.00
700 GAL.	60.00	57.00	110.00	107.00	104.00	4.00
800 GAL.	67.00	64.00	114.00	111.00	108.00	4.00
900 GAL.	72.00	69.00	118.00	115.00	112.00	6.00
1000 GAL.	72.00	69.00	132.00	129.00	126.00	6.00

* Depth dimension - Front-to-Back

ACTUAL DAY TANK LIGHTENED TO EMPHASIS RUPTURE BASIN
 (Refer To Drawing #STD_SW_C On Page 11 For Standard Day Tank Dimensions and to Drawing #MAN_SW_C On Page 17 For Manual Day Tank Dimensions)

REF#	DESCRIPTION OF STANDARD EQUIPMENT
30	1 1/2" NPT - FOR OPTIONAL LEAK DETECTOR
CONSTRUCTION NOTES	
1 -	RUPTURE BASIN BOTTOM, & SHELL - 12 GAUGE STEEL
2 -	DIMENSIONS SUBJECT TO CHANGE WITHOUT NOTICE
RUPTURE BASIN - OPTION #385	
Containment of 150% Minimum Liquid Capacity of Standard or Manual Day Tank	
PY200 - PY1000, (Standard Tanks) PY200M - PY1000M (Manual Tanks) PY200UL - PY1000UL (UL Listed - Standard) PY200MUL - PY1000MUL (UL Listed - Manual)	
 PRYCO, INC. MECHANICSBURG, ILLINOIS	
DRAWN BY: RES	DATE: 03/01/2008
CHECKED BY: DW	REV: 03/01/2008
SHEET NO. 1 of 1	DWG #: RB_150_C