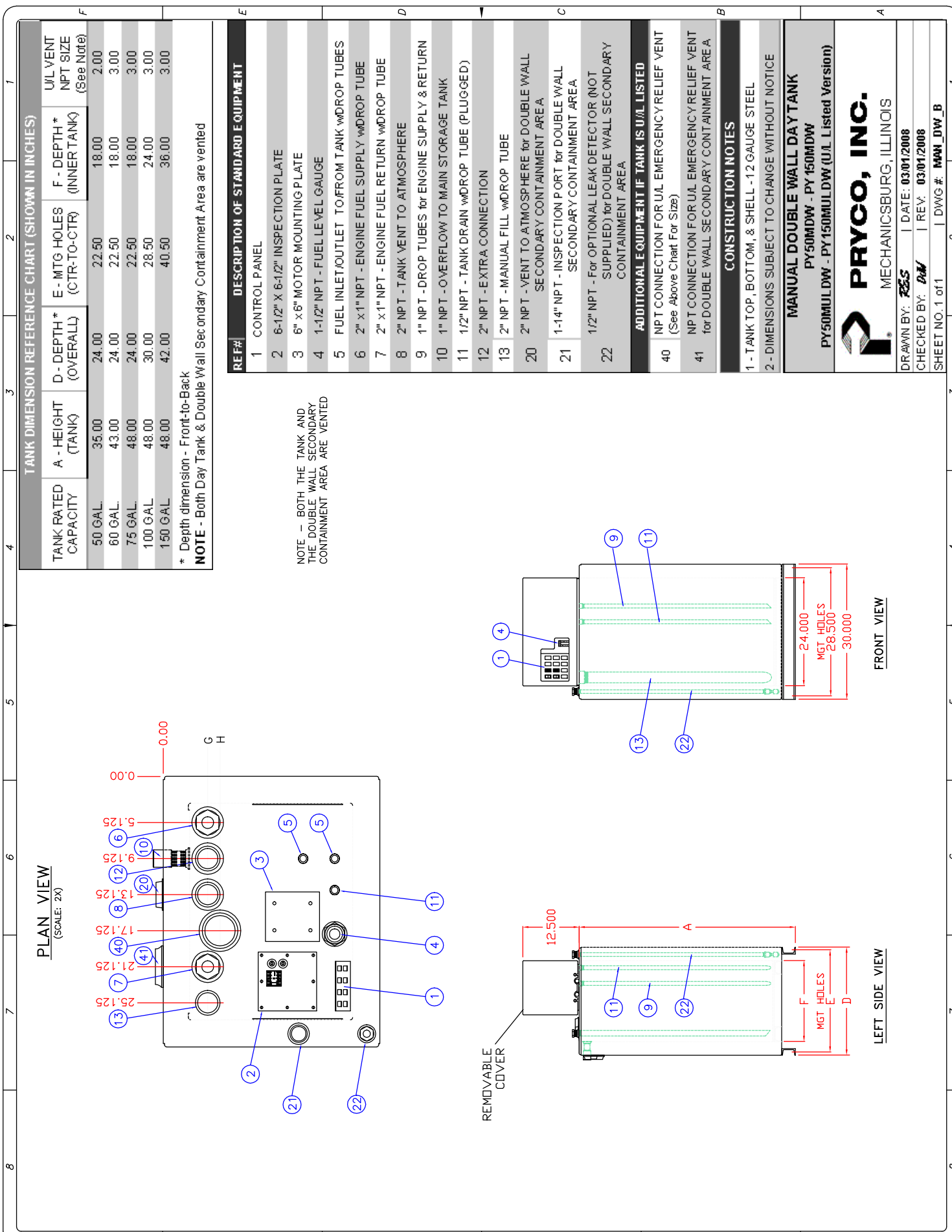


Manual Double Wall Day Tank - PY50MDW thru PY150MDW



TANK DIMENSION REFERENCE CHART (SHOWN IN INCHES)

TANK RATED CAPACITY	A - HEIGHT (TANK)	D - DEPTH* (OVERALL)	E - MTG HOLES (CTR-TO-CTR)	F - DEPTH* (INNER TANK)	U/L VENT NPT SIZE (See Note)
50 GAL.	35.00	24.00	22.50	18.00	2.00
60 GAL.	43.00	24.00	22.50	18.00	3.00
75 GAL.	48.00	24.00	22.50	18.00	3.00
100 GAL.	48.00	30.00	28.50	24.00	3.00
150 GAL.	48.00	42.00	40.50	36.00	3.00

* Depth dimension - Front-to-Back

NOTE - Both Day Tank & Double Wall Secondary Containment Area are vented

DESCRIPTION OF STANDARD EQUIPMENT

- 1 CONTROL PANEL
- 2 6-1/2" X 6-1/2" INSPECTION PLATE
- 3 6" x 6" MOTOR MOUNTING PLATE
- 4 1-1/2" NPT - FUEL LEVEL GAUGE
- 5 FUEL INLET/OUTLET TO/FROM TANK W/DROP TUBES
- 6 2" x 1" NPT - ENGINE FUEL SUPPLY W/DROP TUBE
- 7 2" x 1" NPT - ENGINE FUEL RETURN W/DROP TUBE
- 8 2" NPT - TANK VENT TO ATMOSPHERE
- 9 1" NPT - DROP TUBES FOR ENGINE SUPPLY & RETURN
- 10 1" NPT - OVERFLOW TO MAIN STORAGE TANK
- 11 1/2" NPT - TANK DRAIN W/DROP TUBE (PLUGGED)
- 12 2" NPT - EXTRA CONNECTION
- 13 2" NPT - MANUAL FILL W/DROP TUBE
- 20 2" NPT - VENT TO ATMOSPHERE FOR DOUBLE WALL SECONDARY CONTAINMENT AREA
- 21 1-1/4" NPT - INSPECTION PORT FOR DOUBLE WALL SECONDARY CONTAINMENT AREA
- 22 1/2" NPT - For OPTIONAL LEAK DETECTOR (NOT SUPPLIED) for DOUBLE WALL SECONDARY CONTAINMENT AREA

NOTE - BOTH THE TANK AND THE DOUBLE WALL SECONDARY CONTAINMENT AREA ARE VENTED

ADDITIONAL EQUIPMENT IF TANK IS U/L LISTED

- 40 NPT CONNECTION FOR U/L EMERGENCY RELIEF VENT (See Above Chart For Size)
- 41 NPT CONNECTION FOR U/L EMERGENCY RELIEF VENT for DOUBLE WALL SECONDARY CONTAINMENT AREA

CONSTRUCTION NOTES

- 1 - TANK TOP, BOTTOM, & SHELL - 12 GAUGE STEEL
- 2 - DIMENSIONS SUBJECT TO CHANGE WITHOUT NOTICE

MANUAL DOUBLE WALL DAY TANK
 PY50MDW - PY150MDW
 PY50MULDW - PY150MULDW (U/L Listed Version)



DRAWN BY: *RSS* | DATE: 03/01/2008
 CHECKED BY: *DM* | REV: 03/01/2008
 SHEET NO. 1 of 1 | DWG # *MAN_DW_B*